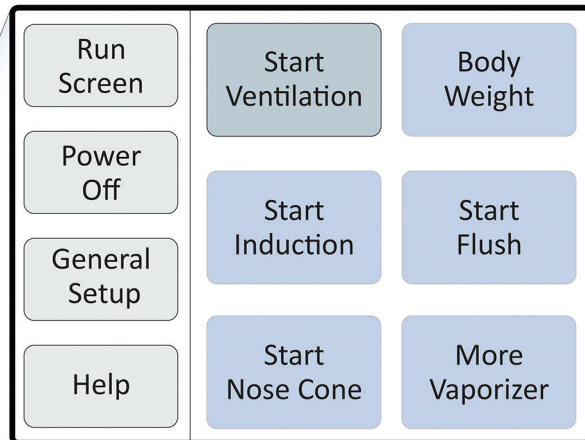


SomnoSuite[®]

Low-flow electronic vaporizer



ANIMA LAB
animal facility and laboratory equipment • animal research models



www.animalab.eu
info@animalab.eu

 **Kent Scientific**
CORPORATION

SomnoSuite

Unlike traditional vaporizers, the SomnoSuite is designed with a precision syringe pump and integrated electronic vaporizer which uses either room air or compressed gas to deliver anesthesia at low flow rates proportionate to the animal's size. Using less anesthesia benefits the animal during procedures, and significantly reduces exposure of lab personnel to waste anesthesia gas. All SomnoSuites include a RightTemp® temperature monitoring and homeothermic control module.

All SomnoSuite systems include:

- Integrated display
- Real-time recordings
- 5 safety alarms
- Internal memory for data storage
- Mini-USB for data output

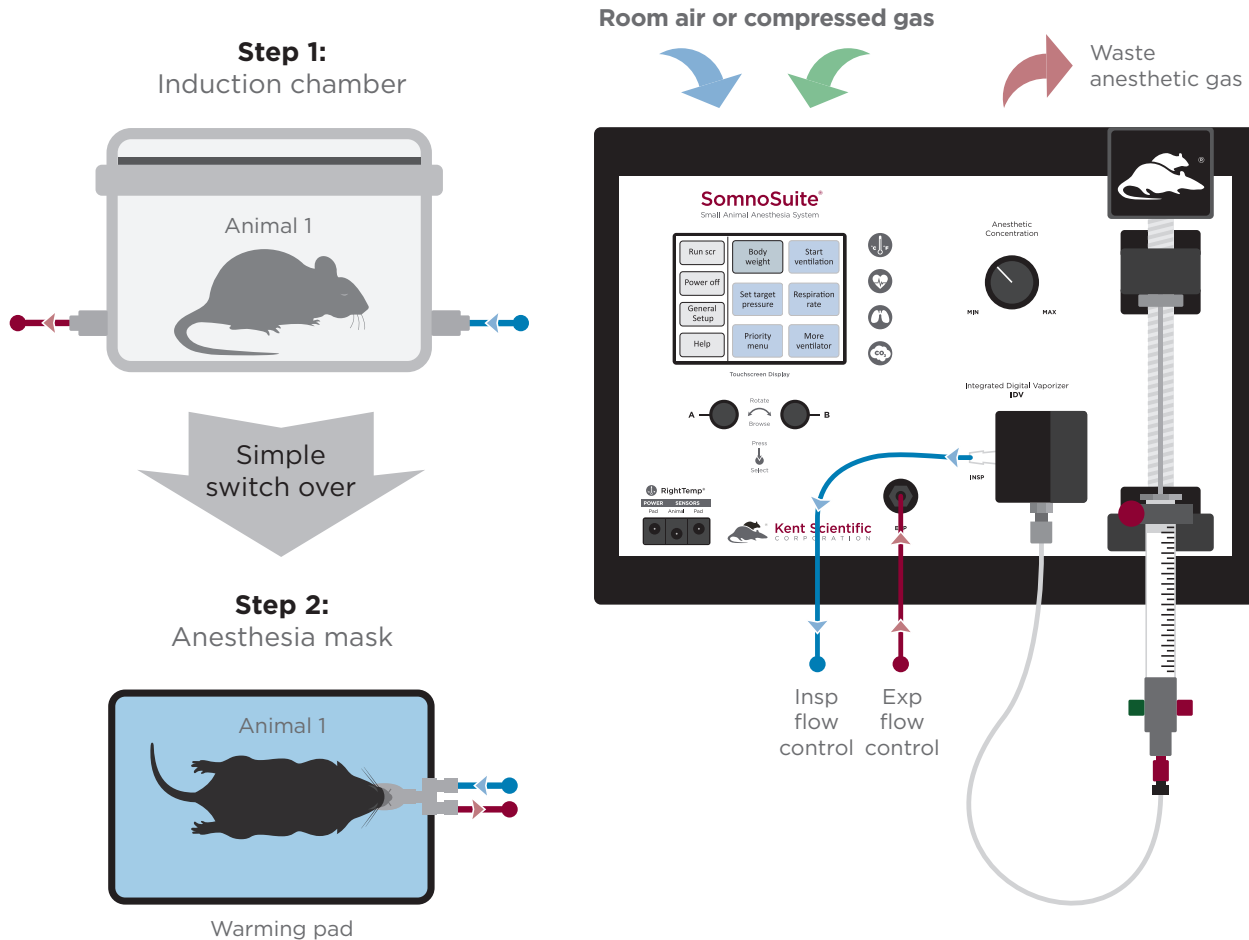


Features & Benefits

- **Integrated electronic vaporizer**
Auto-calculates flow rate based on animal weight
- **Built-in air compressor**
Operates with room air or compressed gas
- **Flow rates from 25mL to 1L**
Requires less isoflurane
- **Intuitive touchscreen control**
Easy to use
- **Induction chamber flush**
Minimize exposure to waste anesthesia gases
- **Efficient design**
Compatible with stereotaxic devices
- **Modular capability**
Select modules for a variety of functions (see back cover for details)
- **Multi-animal capability***
Greater efficiency





**Our clinical department will be pleased to review your study protocol to confirm that our product will meet your specific study requirements.*

Easy Set-up



What makes SomnoSuite superior to traditional vaporizers?

Yearly operation savings

USAGE:	LOW		MEDIUM		HIGH	
	100 Hours of use/year		250 Hours of use/year		500 Hours of use/year	
						
	SomnoSuite	Traditional	SomnoSuite	Traditional	SomnoSuite	Traditional
Volume of Iso needed/year	2.4 Liters	24 Liters	6 Liters	60 Liters	12 Liters	120 Liters
Iso cost/year	\$340	\$3,360	\$840	\$8,400	\$1,680	\$16,800
Compressed gas cost/year	None	\$200 - \$300*	None	\$400 - \$600*	None	\$800 - \$1,200*
Total accumulated cost for all services	\$340	\$3,560 - \$3,660*	\$840	\$8,800 - \$9,000*	\$1,680	\$17,600 - \$18,000*
	You can save \$3,320		You can save \$8,160		You can save \$16,920	

Precise anesthesia delivery

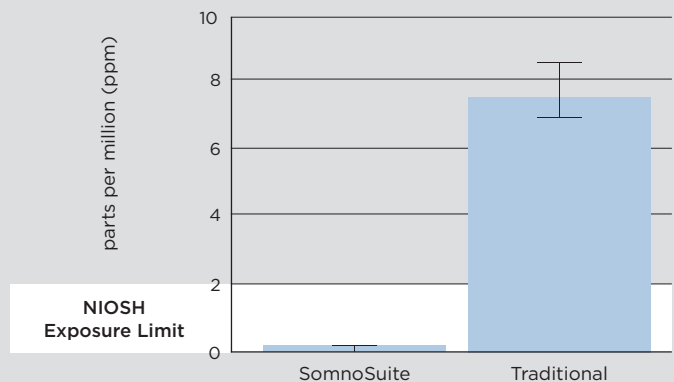


Less waste gas exposure

A recent dosimeter badge test was conducted between the SomnoSuite and a traditional vaporizer to measure waste gas exposure.

Both vaporizers were operated at their respective recommended flow rates. The results show nearly undetectable levels of exposure from the SomnoSuite vs. more than 3x above NIOSH guidelines for the traditional vaporizer.

Visit kentscientific.com for more details.



SomnoSuite®

Flow Rate	0 to 1 L/min
Syringe	5 mL and 10 mL glass syringes
Modes of Operation	Up to 4
Vaporizer	Internal Pump or Compressed Gas
Ventilator	Internal Pump or Compressed Gas
Max. Pusher Force	Greater than 36 kg
Carriage Position Detection	+/- 0.2 mm
Anesthetics	Isoflurane and Sevoflurane
Multi-animal capability*	Yes

Temperature Monitor & Homeothermic Control / RightTemp®

Resistance	2,252 ohm
Tolerance	+/- 0.2° C
Accuracy	0-70° C
Operating Temp.	-60° C to 150° C
Sensor Diameter	Tip/ball diameter: 0.077" Shaft diameter: 0.062"
Time Constant	15.0 seconds
Dissipation Constant	0.75 m/W (° C)

Pulse Oximeter & Heart Rate Monitor / MouseSTAT®

Heart Rate	Up to 900 bpm
Resolution	1%
SpO ₂ Range	70 to 100%
Alarms	5, Programmable
Data Export	Yes
SpO ₂ Sensors	Soft Touch Paw Sensors (standard) Large Animal Clip Sensors Pup Sensors MRI Sensors

Automatic Ventilator / RoVent®

Control Modes	Volume Controlled, Pressure Controlled
I:E Ratio	1:1 to 1:5
PEEP	Built-in
Respiratory Assist	Automatic or Manual
Sigh Pressure	2 to 30 cmH ₂ O
Sigh Breath	Automatic or Manual
Respiratory Rate Range	20 to 350 bpm
Max Inspiratory Flow	1.5 SLPM
Weight Range	3g to 1,250g
Multi-animal capability*	Yes

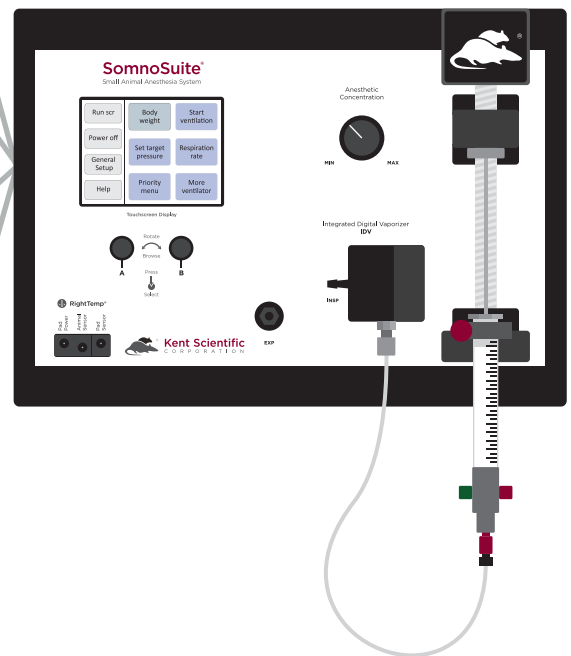
End-Tidal CO₂ Monitor / CapnoScan®

Transducer Type	Sidestream Sensor
Sample Rate	50 mL/min. +/- 10mL/min.
Initialization Time	< 15 seconds
Measurement Range	0 to 16%, 0 to 120 mmHg
Rise Time	< 60 ms
Resolution	0.1 mmHg 0 to 69 mmHg 0.25 mmHg 70 to 150 mmHg
Accuracy	0 to 150 mmHg, ±2 mmHg

*Our clinical department will be pleased to review your study protocol to confirm that our product will meet your specific study requirements.

SomnoSuite includes a **FREE RightTemp** temperature monitor and homeothermic control module.

Combine other modules you need now and add additional modules later



1-Year, 100% Parts & Labor Warranty (3-Year extended warranty available)
Visit our website for additional product information.

ANIMA LAB
animal facility and laboratory equipment • animal research models

www.animalab.eu

Kent Scientific
CORPORATION

1116 Litchfield Street
Torrington, CT 06790

